



SCOPSERV INTERNATIONAL Inc.

SCOPSERV INTERNATIONAL INC.

ScopTel™ IP PBX software VoIP State of the Art Appliances

Welcome to the world of ScopServ International Inc.

ScopServ International inc. (SSI) is proud to finally make its entrance into the North American market.

Although a Canadian based company, SSI has primarily focused its sales and development, over the last 4 years, on European and South African markets.

Having achieved great success across the Atlantic , SSI is now ready to introduce its flagship product, **ScopTel™** IP PBX.

This awesome full featured Management Graphical User Interface for **ASTERISK®** is loaded with the most ad-

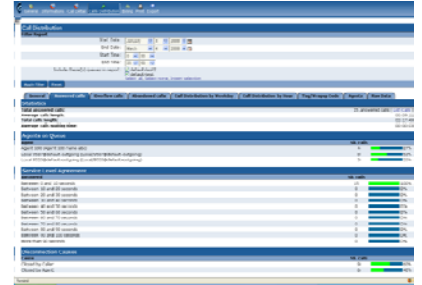
vanced features and options you can find on the market.

ScopTel™ IP PBX offers you all the functionalities you may want to see and have in a VoIP system.

All configurations and operations are made and managed through a simple and convenient Web interface.

Because of the scalability of the **ScopTel™** IP PBX software, even the smallest enterprises will have the benefits of what was before reserved only for the bigger ones.

With the best price/quality ratio of its kind, SSI will



provide you all of the advantages that proprietary systems offer and even more, without having to pay a substantial premium to own it.



Quick, Great and Affordable.

ScopTel™ IP PBX : THE VoIP ALTERNATIVE for today's business.

It is now pretty obvious that EVERY enterprise will eventually one day or another embrace the new Voice Over IP technology .

The question is not IF they will take the step but WHEN this step will be taken.

The other big question is the technology they will choose.

Many products are being brought to their attention and they will have to choose wisely if they do not want to put themselves in situation they may have a hard time recovering from.

In today's choices, THE VoIP ALTERNATIVE is an Asterisk management system and **ScopServ International inc** provides one of the most stable, feature rich environment and worldwide accepted solution.

In the news:

ScopTel™ : The heart of your phone system	2
Why an Asterisk management Interface ?	2
1U Appliance: SMB best choice	2
3U Appliance: When you need more power	3
SFF Appliance: For smaller environments	3
Client comments and experiences	3
Add-on, features and details	4

Hot topics.

- Welcome to the world of ScopServ International Inc.
- Appliances, ScopServ SSI-3U , ScopServ SSI-1U, ScopServ SSI-SFF.
- What people are saying.
- Everything we have to offer.

ScopTel™ : The heart of your phone system

- Web Based GUI for Configuration and Management of Asterisk IP PBX.
- It manages all configurations such as Users, Extensions, Interfaces and much more...
- Allowing Multiple Administrators with different levels of access/permission control.
- End-users interface to setup personal preferences, Call Forward, Follow-Me, Personal IVR, Voicemail management and reports.
- Manages multiple companies on a single system with our easy to use Multi-Tenant manager.



- Ability to enhance functions using Custom Script (AEL).
- Automatic Outgoing Lines fall-back based on availability and QoS for VoIP Accounts.
- Supports incoming lines rules based on CallerID (Phone, Area Code, Pattern, ...)
- Virtual Fax / Hylafax.
- Allows to create and manage DUNDi peers/mappings.

- Emergency Calls (911/112/...) and Notification.
 - Incoming and Outgoing Call Screening.
 - Off Site Notification for Voicemail, Email, Pager and Phones.
- CampOn per Extension.
- And so much more, depending on your needs...

Remote management of all your options with our easy to use Web based interface.

Why an Asterisk management Interface ?

Asterisk is the world's leading open source telephony engine and tool kit. Offering flexibility unheard of in the world of proprietary communications, Asterisk empowers developers and integrators to create advanced communication solutions...

ScopTel™ IP PBX, ScopServ Teleph-

ony Server management graphical interface for Asterisk is the most complete and most comprehensive GUI on the market!

Fully compatible with all versions of Asterisk (1.0, 1.2 and 1.4).

We support mainly CentOS Operating system and all Red Hat based systems



The ScopServ Telephony Server management interface for Asterisk is the most complete and comprehensive GUI on the market!



1U Appliance: SMB best choice

The **ScopServ SSI-1U-X** multi-purpose application appliance has been developed to accommodate the demands and requirements of any small to medium enterprise.

In any configuration, It will take care of all user management needs. Efficient and powerful, this appliance will support all the highly evolved services for all your telephony essentials.

Equipped with powerful and state of the art components, it will be versatile and trustworthy.

It can be set as either a complete IP PBX system or simply as a gateway to manage either VoIP or PSTN.

This system comes pre-loaded with **ScopTel™ IP PBX**, our world class management interface (GUI) for Asterisk.

Exclusive chassis with brushed aluminum front bezel

Core2Duo CPU for great performance

Up to 8Gb of memory

Up to 2 x 750Gb SATA II hard drives

2 x10/100/1000Mbps Network Adaptor

300 W Power Supply

Frontal PCI access for easy management



3U Appliance: When you need more power

Another State of the Art system, backed by our 3 Year warranty that will provide you with great performance and unprecedented reliability.

The ScopServ SSI-3U-X multi-purpose application appliance has been developed to accommodate all needs and requirements of any medium and large enterprise.

This system will offer you everything you are looking for in an IP telephony environment and will surpass any requirements your company may have.

Equipped with powerful and state of the art components, it will be

versatile and trustworthy.

It can be set as either a complete IP-PBX system or simply as a gateway to manage either VoIP or PSTN

Efficient and powerful, this appliance will support all the highly evolved services for all your telephony needs.

(digital/analog) lines (up to 10 x PRI).

This system comes pre-loaded with ScopTel™ IP PBX, our world class management interface (GUI) for ASTERISK.

Exclusive brushed aluminum front bezel.

Dual-Xeon® Motherboard.

Hot swappable 73Gb SCSI drives.

NIC Broadcom 10/100/1000.

20 X 2 LCD panel .

Integrated 7 in 1 memory card reader.

Mounting kits (rack mount (2 and 4 posts), wall mount, tabletop pegs).

Redundant power supplies.

3 full year warranty plus our state of the art ScopTel™ VoIP PBX Software

SFF Appliance: For smaller environments

The ScopServ SSI-SFF-X multi-purpose application appliance is our entry-level model and is intended for small businesses.

It comes standard with our unique ScopTel™ software for your complete management of 10 users and is easily expandable to 25 as your needs grow.

It's smaller size will help its placement in your office and its silent operation will permit you to have it close to you for better management.

The ScopTel™ version is the same one used for our much larger Appliances so even if you have a smaller outfit, you still have access to all our software's power and manageability.

The name "SFF" stands for Small Form Factor and defines a small, easily removable and manageable unit.

In any configuration, It will take care of all user management needs.



Client comments and experiences

"ScopServ was tested by our engineers and it performed exceptionally well. It fits into our business model and it is a product that we believe in so we decided to launch it right away."

"ScopServ's products are definitely on the high end of the industry. They perform extremely well against it's competitors which are also Asterisk based."

"We initially tried to develop the Asterisk software ourselves but soon realised that it was too raw. ScopServ was willing and able to work with us to further develop the product and to work out some of the kinks so that it was tailored to serve the demands of the customers in our market place."

ScopServ also provided us with excel-

lent support, great turnaround speed on any questions or concerns that we had and they had the ability to professionally address all of our problems."

"ScopServ has a Very complete interface which evolves very quickly, It makes me save a lot of configuration time."



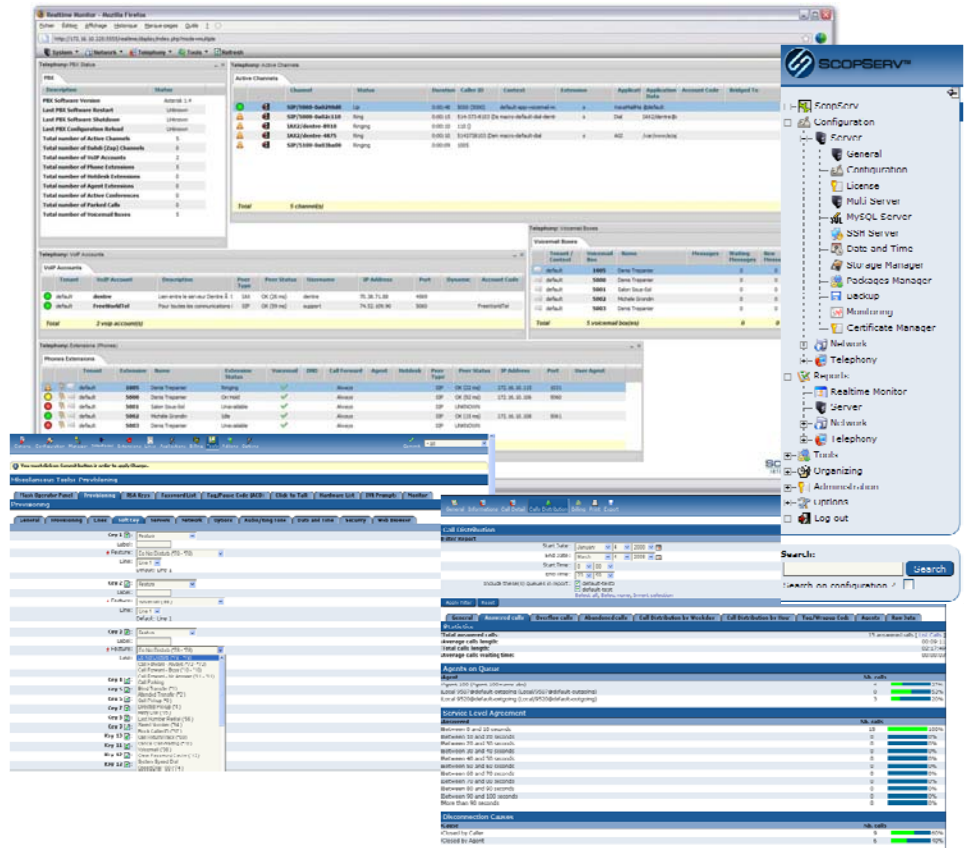
SCOPSERV
INTERNATIONAL Inc.

417 Binette Blvd
St-Eustache, Quebec
Canada J7P 5N6

Tel : 1-514-373-8102
Fax : 1-450-491-3035

email : info@scopserv.com

Quick, Great and Affordable



ScopServ is an OEM & Solution
Provider for Sangoma Technologies
and supports 100% their products.



Add-ons, features and details

- **ADSI On-Screen Menu System**
- **Alarm Receiver**
- **Append Message**
- **Authentication**
- **Automated Attendant**
- **Blacklists**
- **Blind Transfer**
- **Call Detail Records**
- **Call Forward on Busy**
- **Call Forward on No Answer**
- **Call Forward Variable**
- **Call Monitoring**
- **Call Parking**
- **Call Queuing**
- **Call Recording**
- **Call Retrieval**
- **Call Routing (DID & ANI)**
- **Call Snooping**
- **Call Transfer**

- **Call Waiting**
- **Caller ID**
- **Caller ID Blocking**
- **Caller ID on Call Waiting**
- **Calling Cards**
- **Conference Bridging**
- **Database Store / Retrieve**
- **Database Integration**
- **Dial by Name**
- **Direct Inward System Access**
- **Distinctive Ring**
- **Distributed Universal Number Discovery (DUNDI™)**
- **Do Not Disturb**
- **E911**
- **ENUM**
- **Fax Transmit and Receive**
- **Flexible Extension Logic**
- **Interactive Directory Listing**

- **Interactive Voice Response (IVR)**
- **Local and Remote Call Agents**
- **Macros**
- **Music On Hold**
- **Music On Transfer**
- **NPA-NXX (North American Dialplan)**
- **Privacy**
- **Overhead Paging**
- **Protocol Conversion**
- **Remote Office Support**
- **Roaming Extensions**
- **Route by Caller ID**
- **ScopSwitch / Realtime Monitor**
- **SMS Messaging**
- **Spell / Say**
- **Streaming Media Access**

• **And much more...For the complete list, please go to www.scopserv.com**